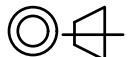
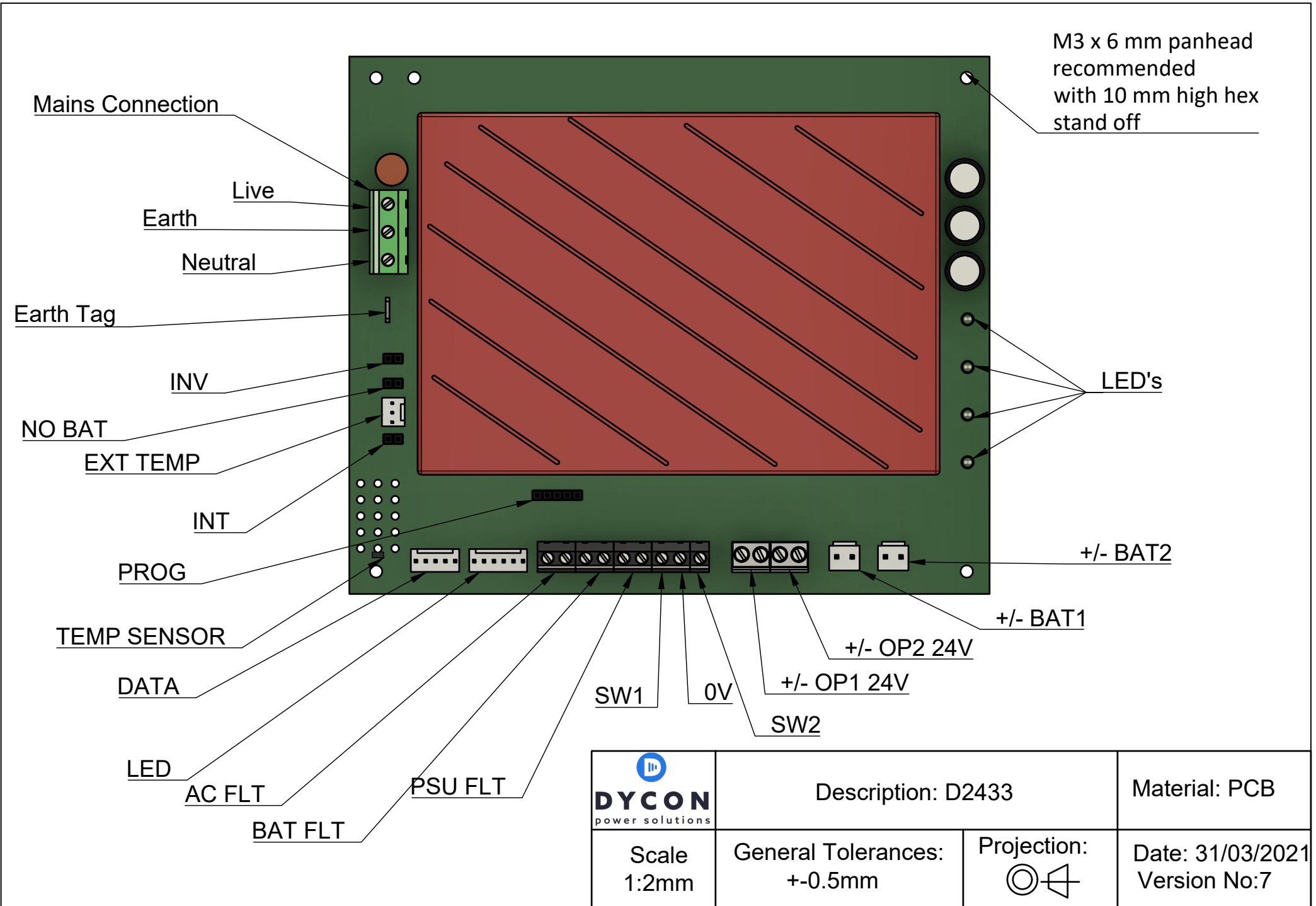
 DYCON power solutions	Description: D2433		Material: PCB
Scale 1:2mm	General Tolerances: +-0.5mm	Projection: 	Date: 31/03/2021 Version No:7



M3 x 6 mm panhead
recommended
with 10 mm high hex
stand off

Mains Connection

Live
Earth
Neutral

Earth Tag

INV

NO BAT

EXT TEMP

INT

PROG

TEMP SENSOR

DATA

LED

AC FLT

BAT FLT

PSU FLT

SW1

0V

SW2


+/- OP2 24V

+/- OP1 24V

+/- BAT1

+/- BAT2

LED's

 DYCON power solutions	Description: D2433		Material: PCB
	Scale 1:2mm	General Tolerances: +/-0.5mm	Projection: 