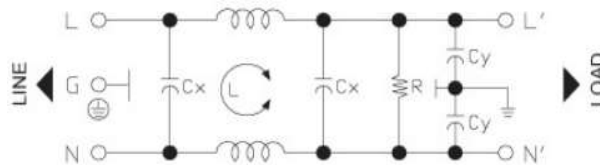


# DMfilter01



## Mains Input Filter



High performance single phase, single stage mains filter for additional protection and filtering of incoming mains supply. Ideally suited for areas with unstable mains supply. Can be fitted and supplied with Mains input connector block with removable fuse. Supplied complete with cable set for connection to Dycon Power Supply Units.

Part Number	DMfilter01
Description	Mains input filter
Mountings already fitted in these Dycon boxes	B, C, XLB, XLB, XB, E and G
Mains Input	115-250VAC 50/60Hz
Rated current	1-20Amp @40°C
Leakage current @ 250VAC	Quiescent 0.38mA; Max 0.89mA
Leakage current @ 115VAC	Quiescent 0.19mA; Max 1.87mA
Terminals	Faston 6.35mm
Dimensions (H x W x D mm)	51 x 51 x 28.5mm, excluding fixing lugs, 71mm with fixing lugs
Weight	160 grams
Fixing	M4 stand off with 61mm between centres

**Dycon Power Solutions Ltd**  
Unit A, Cwm Cynon Business Park, Mountain Ash,  
CF45 4ER, United Kingdom.

**For more information about the Dycon products:**  
website: [www.dyconpower.com](http://www.dyconpower.com)  
email: [sales@dyconpower.com](mailto:sales@dyconpower.com)

**Or to discuss your specific needs:**  
+44 (0)1443 471 900



Dycon leads the security and associated power supply markets, with UK design and manufacture of advanced power products, engineered to provide high quality, cost-effective solutions to meet current regulations and the specific needs of system integrators and end-users.

DMfilter01 data sheet 07102021 V7