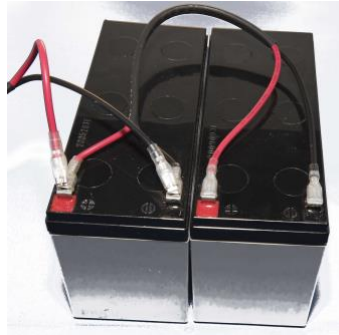


Dycon Accessories



Cables & power accessories



CAB043 cable linking 2 x 7Ah batteries to make a 14Ah power-pack.

- Linking cables for batteries with M5 connectors
- 1.2-7Ah & 17Ah cables and connectors
- Replaceable, ceramic fused power-leads
- 2- & 3-way earthing cables
- Splitter cables
- Battery terminal converters

Dycon's power supplies provide an output and supply a cable to charge suitable batteries, for most applications this is sufficient, but there are applications that require more than a single battery or where a larger battery is needed and that may have a different connector. The need to provide for these can delay an installation requiring the installer to prepare suitable cables on site or source them locally. To avoid this and speed up system installation, Dycon produces a series of professionally-produced cables with different types of connectors that suit most batteries. These options include cables that allow 2 batteries to be connected in parallel to increase the Amperage capacity from, for example, 7Ah to 14Ah, this works with the standard connector cable supplied with Dycon PSU's. Another version can also be used for other batteries with M5 connectors like 17 and 24Ah units. For 24VDC PSU's with a single battery connector a Dycon link cable connects the positive to negative and the battery cable connects to the remaining spade connectors to provide 24VDC.



3 x sets of connectors-M5, wide spade & small spade T2 terminals



Dycon's extensive cable connection range includes a fused power lead with a replaceable glass fuse up to 8A; spaded earth-leads, ideal for earthing any metal housing, with a 3-way version where additional earthing points may be required. Where you need to drive any peripheral, like an output splitter or a fire-relay module, Dycon has a ready-prepared cable with the correct length and tinned ends to make installation quick and easy. A 3-way mains power connector block, fitted, with a 3.15A x 20mm ceramic fuse, provides a simple way to safely distribute 230VAC power within a housing. To complete the range and to cater for those tricky moments when you need to change the connector size on an existing cable, Dycon has three sets of connectors that allow you to convert a T1 (4.85mm) small spade to M5 ring terminal, a T1 (4.85mm) small spade to a T2 (6.35mm) wide T2 terminal, and a T2 6.35mm wide spade to a T1(4.85mm) small spade.



DYCON
power solutions

Cables for Connecting Batteries to a Dycon Power Supply (PSU)

All Dycon battery backed-up PSU's have a PCB-mounted 2-pin Molex (JST) socket to provide the power connection to a suitable battery and, depending on the type of battery used, Dycon offers two different types of connection. For connection to 1.2, 2.1, 2.8, 4 & 7Ah VRLA batteries, a red/black 16AWG cable with plug T1 spade (4.85mm) connector and a 2-pin Molex connector is available. For larger 17 and 24Ah VRLA batteries, a red/black 16AWG cable with M5 ring terminal and a 2-pin Molex connector can be used.



Part No.	Suitable for 1.2, 2.1, 2.8, 4 & 7Ah VRLA batteries
CAB001	T1 4.85mm spade connector to 2-pin Molex, 300mm long
CAB002	T1 4.85mm spade connector to 2-pin Molex, 485mm long
CAB039	T1 4.85mm spade connector to 2-pin Molex, 750mm long
CAB0015	T2 6.35mm spade connector to 2-pin Molex, 300mm long

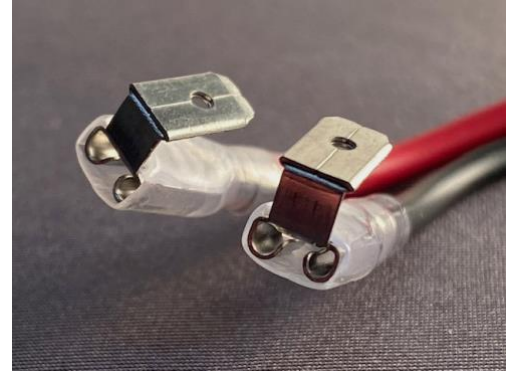
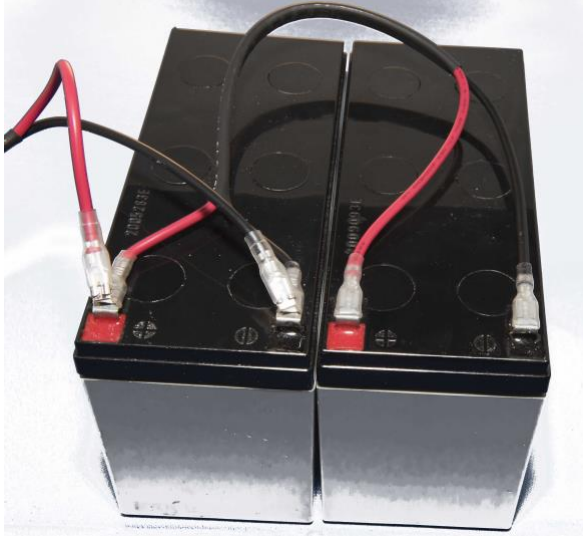


Part No.	Suitable for 17 and 24Ah VRLA batteries
CAB035	M5 ring terminal to 2-pin Molex, 550mm long
CAB037	M5 ring terminal to 2-pin Molex, 750mm long

Battery Linking Cables

A CAB043 allows two batteries with T1 spade connectors (4.8mm) to be connected in parallel increasing the Amperage capacity from, for example, 7Ah to 14Ah. Works with the standard spade connector cable supplied with Dycon PSU's. connected from first battery to second battery. Can also be used on any other batteries with T1 spade connectors like 1.2, 2.1, 2.8 & 4Ah. For use with larger batteries such as 17Ah and 24Ah, CAB042 uses M5 ring terminals to link them together.

A CAB043 connected to 2 x 7Ah batteries to increase the PSU's standby capacity from 7Ah to 14Ah.



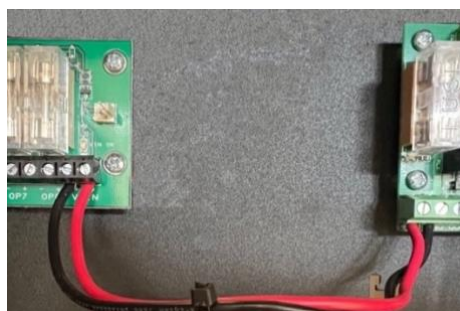
Close up of the Female T1 spade to Female-Male T1 connector



CAB043	Battery linking cable, 2 x T1 female connectors to T1 female + T1 (male spade connector).
CAB042	Battery linking cable, M5 to M5, 300mm long
CAB021	Red battery cable for linking 2 x 12VDC batteries to make 24V, T1 to T1, 250mm long

Splitter Cables

Dycon splitter cables are professionally-made, 16AWG black and red cables, with tinned ends, and are designed to provide a reliable power connection to peripheral products such as output splitters & relays.



CAB017	Splitter cable 180mm long, ideal for power connection from PSU to system peripherals
CAB018	Splitter cable 450mm long, ideal for power connection from PSU to system peripherals

Metal Case Earthing Cables

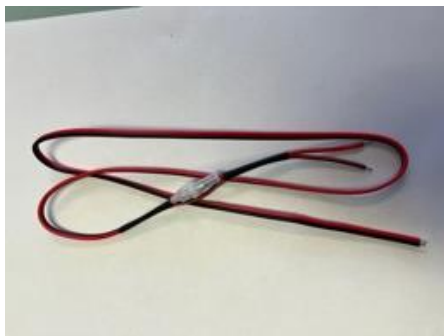
To guard against electrical interference problems due to poor earthing of control equipment or PSU's, Dycon provides two simple and easy-to-fit solutions. A CAB032 has a T2 6.35mm spade connector & a tinned end which is connected to the earth screw terminal. The CAB31 has 3 x T2 spade connectors to earth the metals door/lid and the base.



CAB032	2 x spade earth cable with 2 x T2 & a tinned end. T2 to T2, 350mm long, T2 to tinned end 150mm long
CAB031	3 x spade earth cable, 3 x T2 connectors, First = T2 to T2, 350mm long, second = T2 to T2, 150mm long

Fused Power Lead

16 AWG red/black cable 1200mm length with tinned ends on both sides. Bayonet fuse holder in line & supplied with a 1A replaceable glass fuse



CAB038	Fused power lead fitted with a 1A replaceable glass fuse.
--------	---

Fused Mains Power Block

Mains fuse block connector 3 way with a 3.15A 5 x 20 mm ceramic fuse. Includes 100mm blue/brown/yellow-green mains cable, for connection to a PSU.



CAB003	Fused mains power block with a replaceable 3.15A ceramic fuse.
--------	--

Battery Terminal Converters

These simple converters can be used with existing cables to convert existing battery terminals to other sizes.

FIX 060	Battery terminal converter, T1 to M5 ring
FIX 061	Battery terminal converter, T1 to T2
FIX 062	Battery terminal converter, T2 to T1

Dycon Power Solutions Ltd

Unit A, Cwm Cynon Business Park, Mountain Ash, CF45 4ER, United Kingdom.

For more information about the Dycon products:

website: www.dyconpower.com
email: sales@dyconpower.com

Or to discuss your specific needs:

+44 (0)1443 471 900

Dycon leads the security and associated power supply markets, with UK design and manufacture of advanced power products, engineered to provide high quality, cost-effective solutions to meet current regulations and the specific needs of system integrators and end-users.

*Cables & power accessories datasheet
02112023v17*