

E-box



Large Multi-purpose Steel Housing for Dycon Power Supply Modules, System Peripherals & 3rd Party Controller Products



Standard white E-box, an optional black version is also available

- Tough steel construction
- Extensive choice of power modules
- Wide range of system peripherals
- Pre-drilled back simplifies adding peripherals
- Optional Fixing plate



An E-box fitted with a Dycon D1555 5A PSU and a 17Ah VRLA battery, showing ample space for extra peripherals, cables & batteries

- Pre-drilled to accept up to 6 x control modules supplied by major access system manufacturers
- Space for 2/3 x 7Ah or 2 x 17Ah VRLA batteries
- 8 x 25mm & 4 x 20mm knock-outs
- Optional front and back tamper

Dycon's E-box is a large, multi-purpose, steel housing designed to have most of the Dycon Power Supply Modules and peripherals installed and still have ample space to fit several 3rd Party modules and batteries without cramping cables or connections. These standard Dycon peripheral options include 4 & 8-way output splitters, relay output modules, fire interface relays, dual redundancy modules, mains filters, front and back anti-tamper switches, DIN-rails, cable management fittings and IP4x rated safety enclosures. To provide total flexibility and ease of installation, the housing is pre-drilled to accept most Dycon PSU modules and peripherals making module upgrades very easy and quick. The same facility has been provided for a whole range of 3rd Party modules and devices including access control devices such as door controllers, expansion modules and system controllers from leading brands including Access Security Products™, ControlSoft™, Honeywell™, Lenel™, Mercury™, S2™, Sensor Access™, Gallagher, Paxton™ and Vanderbilt™ The E-box is the perfect one-stop-shop for all access control systems: totally flexible power options from 0.5A to 20A; with or without battery standby charging; space for 3 x 7Ah or 2 x 17Ah batteries; pre-drilled fixing holes for most major access system controllers or expansion modules; pre-drilled fixings for Dycon 4 and 8 way expanders, relay and fire relay output splitters and dual redundancy units. This flexibility means that changing from one make controller to another no longer needs another housing or extra drilling



DYCON
power solutions

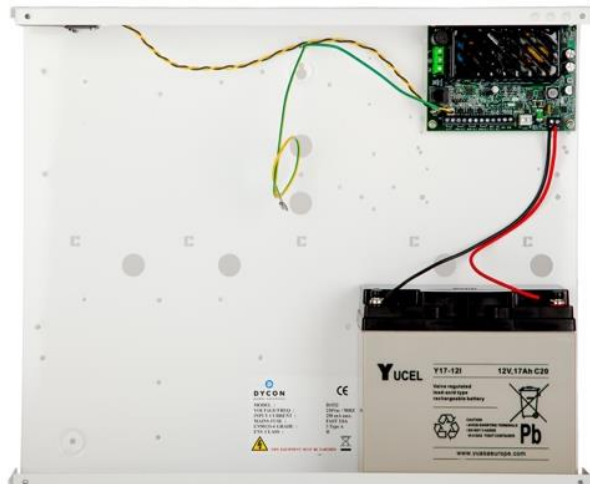
E-Box features



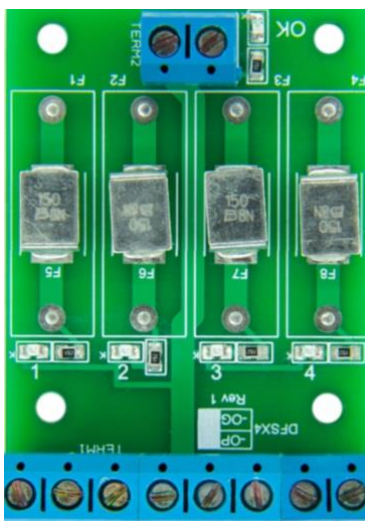
An E-box fitted with a Dycon D1555 5A PSU and 2 x 17Ah VRLA batteries, showing ample space for extra peripherals

- Pre-drilled to accommodate rapid fixing or change-over of most Dycon Power Modules from 0.5A -20A including EN50131 Grade 1 - 4 versions.
- Every E-box has fixings ready to accept the following Dycon System Accessories and extensions: -
 - D15X8, 8-way output splitter module
 - DFSX4-0P, 4-way output splitter module
 - D15X4-BNC 4-way output splitter with BNC sockets for CCTV products
 - DFR-1-12 & DFR-1-24, universal output relay /fire relay module
 - Tamperkit-01, EN50131 Grades 1-3 anti-tamper kit
 - D2500, dual PSU's redundancy module
 - Main's power connector block with removable fuse
- The housing has also been pre-drilled ready to accommodate control and extension modules from most major access control and building management (BMS) systems including the following:
 - Access Security Products™ ASP-8000
 - ControlSoft™
 - Honeywell™ Tema module
 - Lenel™S2
 - Mercury™
 - Paxton™
 - Vanderbilt™/ACT™pro-100 and pro120
 - Gallagher™
 - HID™
 - Lenel™
 - To help speed up installation, Dycon fixing kits for these modules can also be supplied

- To make cabling easier, 18 x knockouts, in total, are provided. The top and bottom each have 2 x 20mm and 4 x 25mm and the back has 6 x 20mm
- A knock-out is also provided at the top to allow for a standard GSM antenna to be fitted and connected to secure signalling devices.
- Once the lid is removed, the sides are open to allow easier cabling.
- Anti-tamper kits are available, these are activated by opening the lid and can also detect removal-from-the-wall and are compliant with IPX-rating and EN50131 Grades 1, 2 & 3.
- The standard lid fixings are M4 zinc plated screws.
- Versions are available with standard 165mm NS35/7.5 'Top-Hat' DIN-Rails already fitted.
- Standard finish is a white, powder-coated, spray paint, heat-treated to provide a durable, wipe-clean surface.
- Black, scratch-resistant paint is also available as an option.
- Custom paint colours can be accommodated if that colour is available in the type of paint used by our manufacturing process and subject to a minimum quantity of 50. Longer lead times apply.
- There is sufficient space for 2 x 7/8 Ah or 2 x 17/18 Ah VRLA batteries
- Housing is supplied with an Earth lead.
- A mains filter for additional protection is also available
- A separate mains block with removable fuse can also be supplied



This unit uses a single 17Ah battery, leaving ample space for additional Dycon 4-way, 8-way or relay output splitters, 3rd Party access system controllers, other peripherals & a variety of secure communication devices



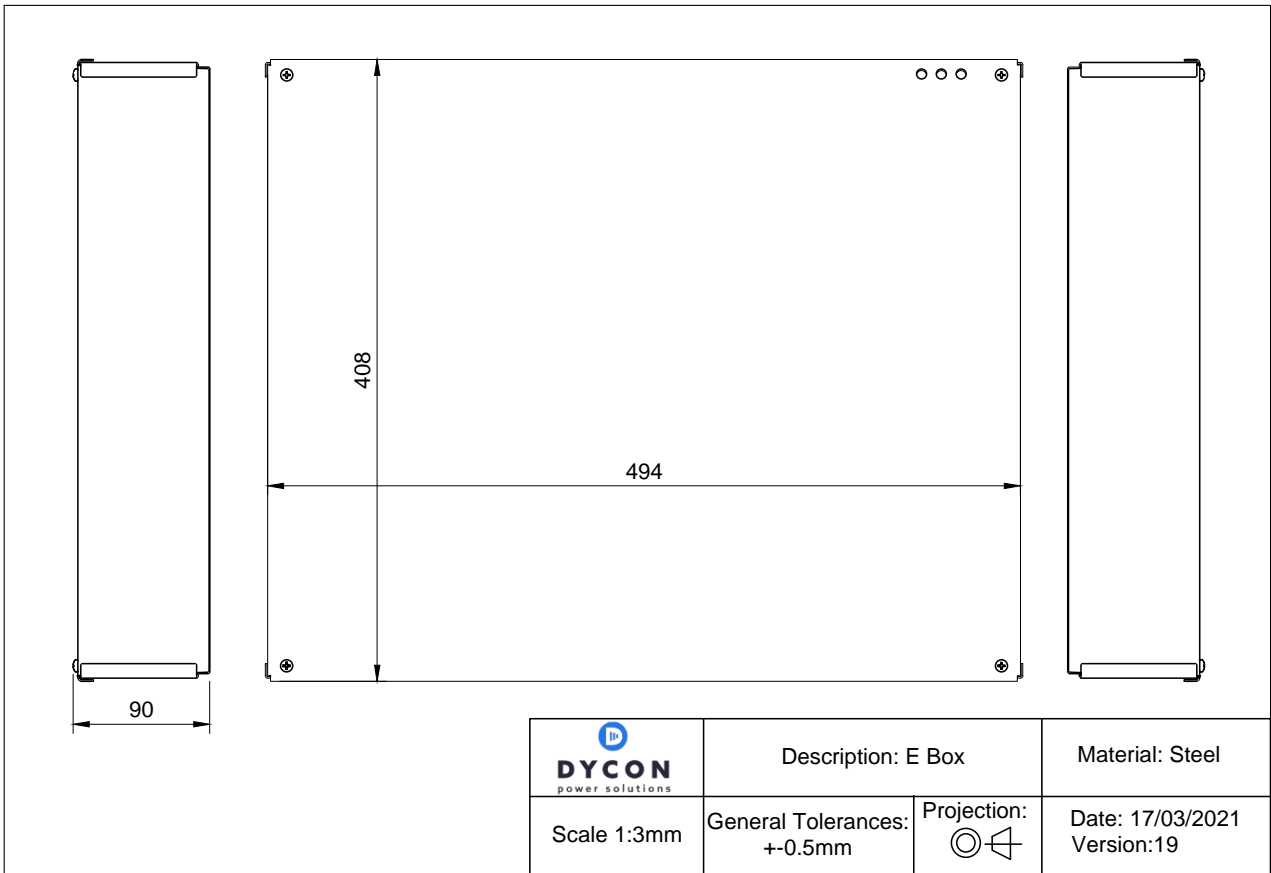
To enable a 12 or 24VDC output to be split into fused 4 or 8-separate circuits, a Dycon 4-way or 8-way output splitter can easily be fitted. Shown with 4 way PTC resettable fuses



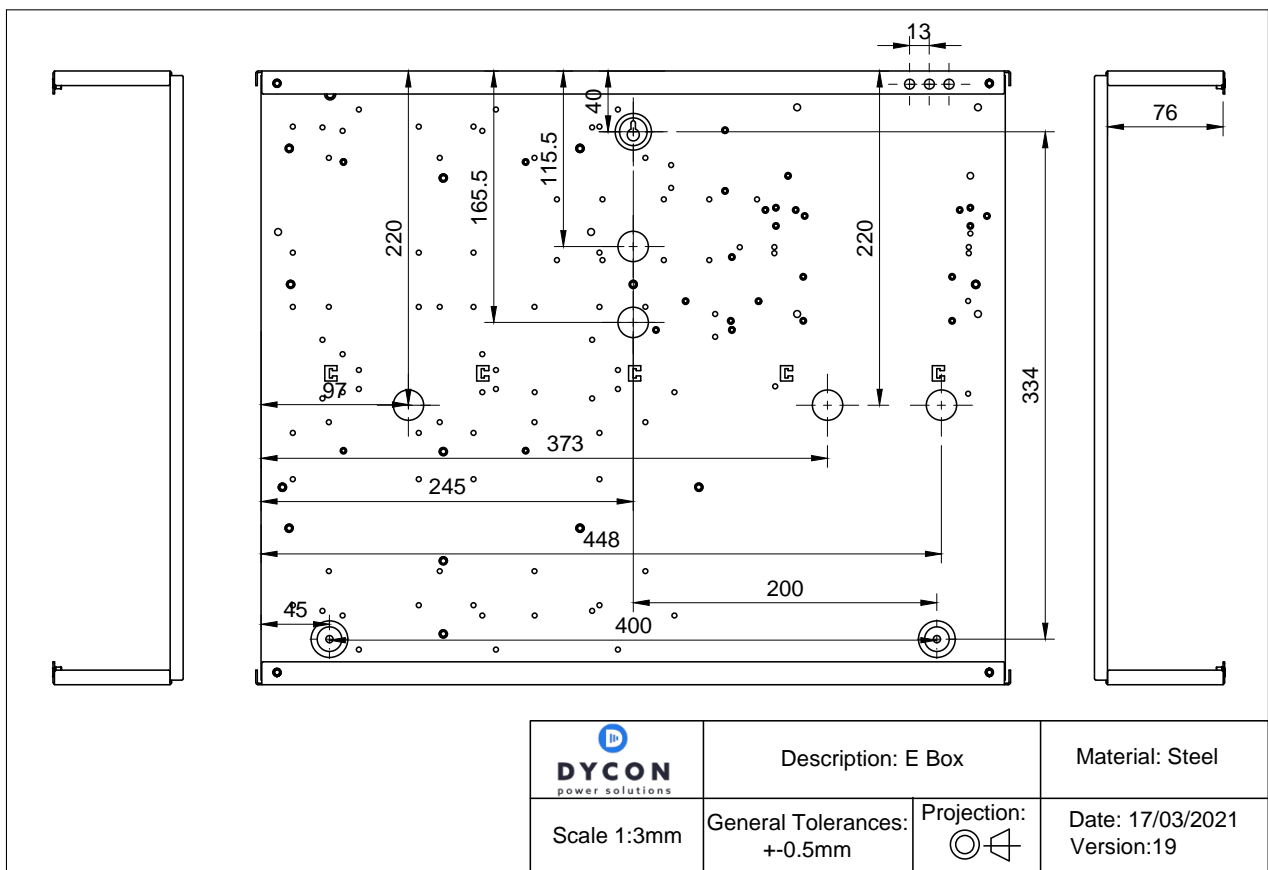
DFR-1-12 (12VDC unit) or DFR-1-24, (24VDC unit) relay board that switches the output power if the input is closed or opened.

E-Box Configuration options

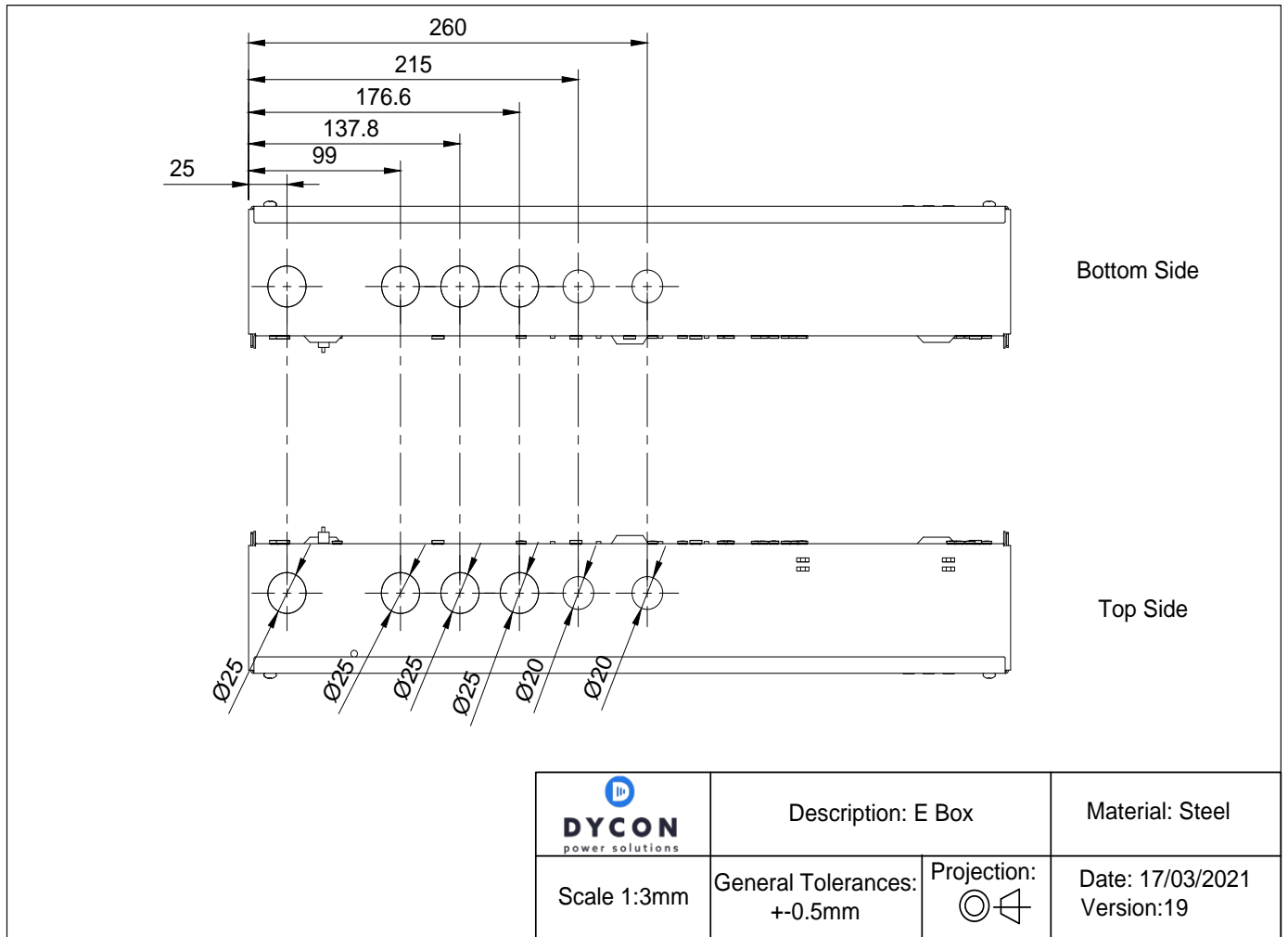
Base and lid dimensions



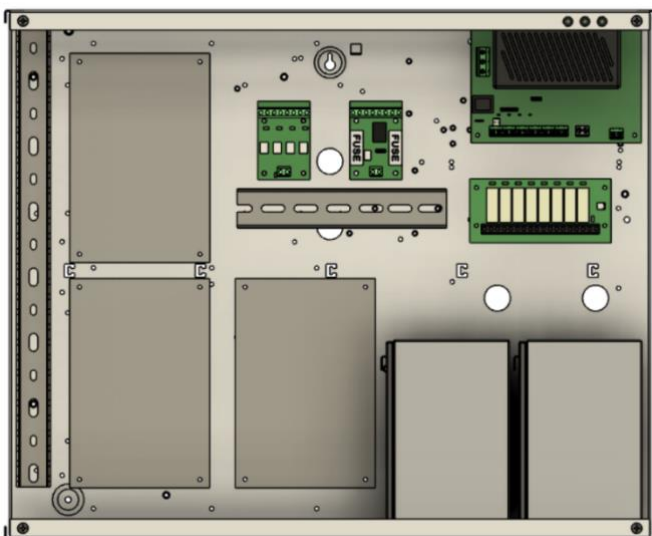
Rear fixing holes positions, knockout and LED positions and sizes



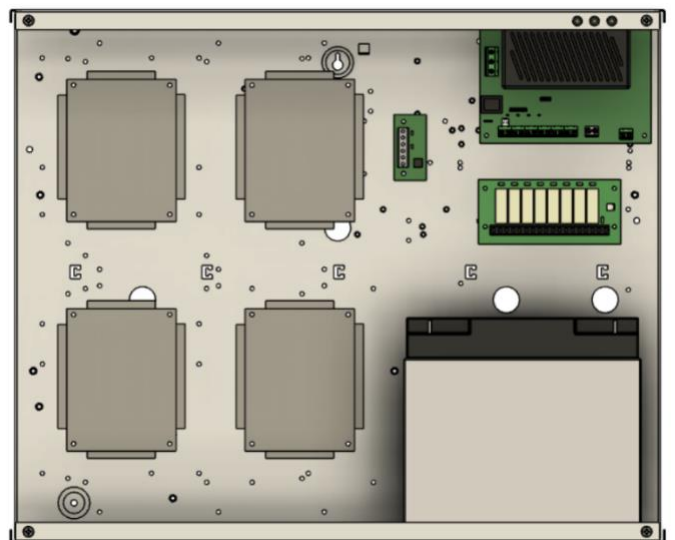
Top & Bottom knockout positions and sizes



E-Box Configuration Layout options

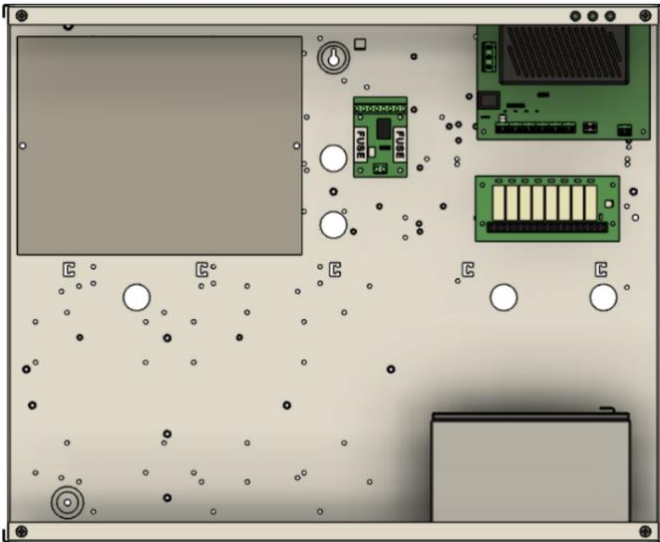


D1532 PSU, 3x ASP's, 4-way splitter, 8-way splitter, Fire relay, 2 x 12V 7Ah Lead Acid Batteries, DIN rail, Cable management on left vertically.

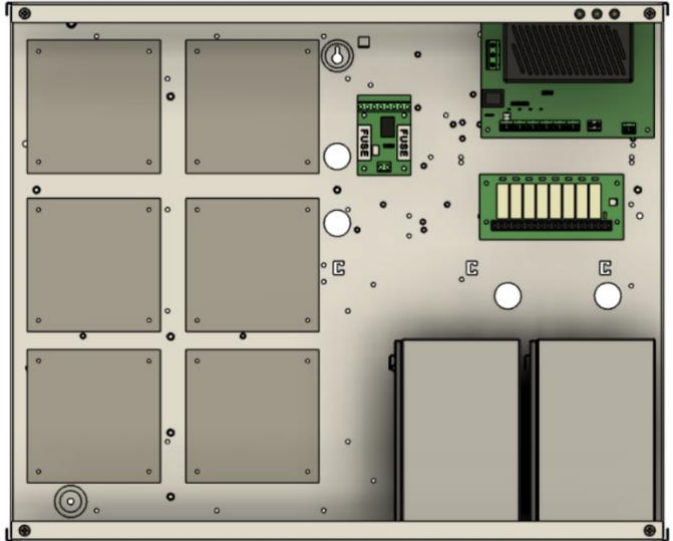


4 x Paxton controllers, D1532 PSU, D2500, 8-way splitter, 12V 17/18Ah Lead Acid Battery

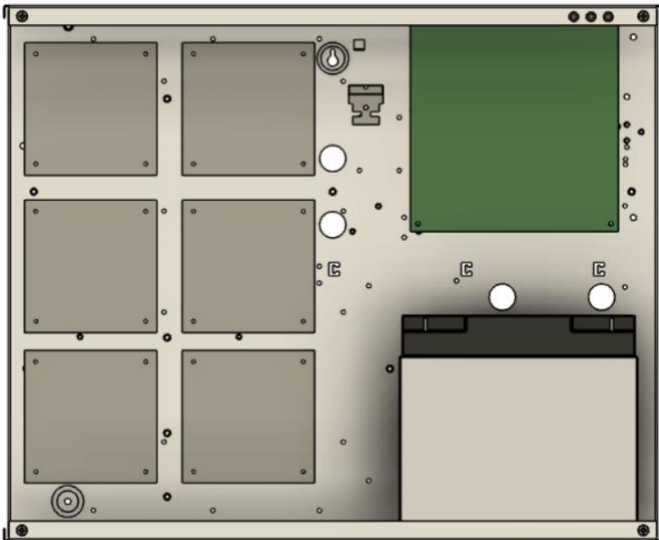
E-Box Configuration layout options



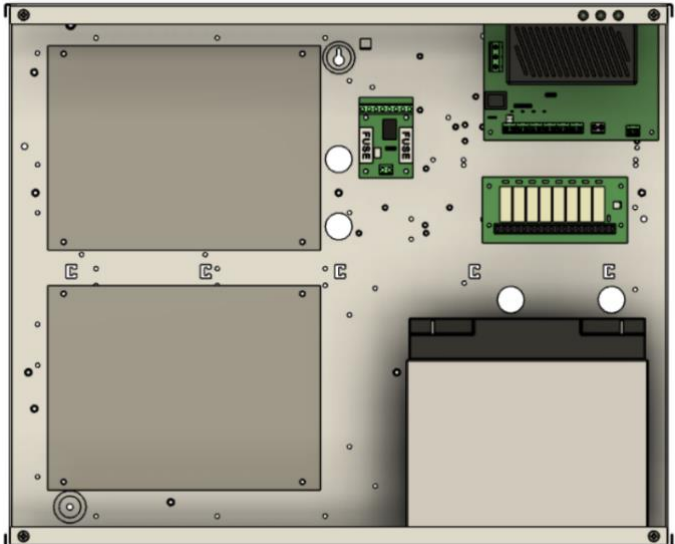
W-Plate. Metal 2mm for fixing other equipment, Fire relay, D1532 PSU, 8-way splitter, 12V 7Ah Lead Acid Battery



6 x Vanderbilt, Fire relay, D1532 PSU, 8-way splitter, 2x 12V 7Ah Lead Acid Batteries

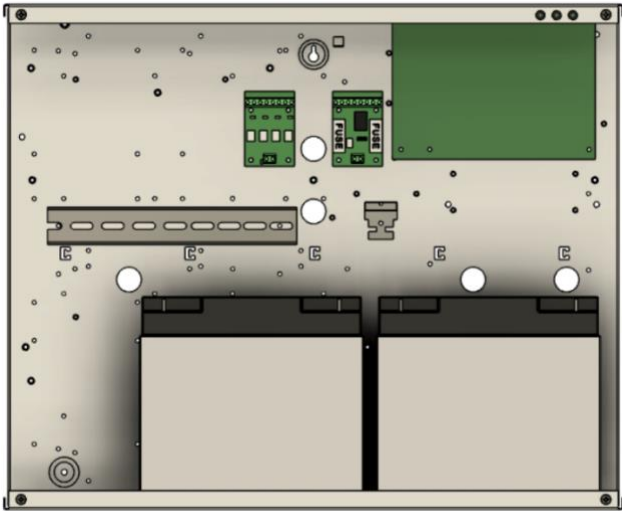


6 x Vanderbilt, Fire relay, D1460, Main connector block, 12V 17Ah Lead Acid Battery

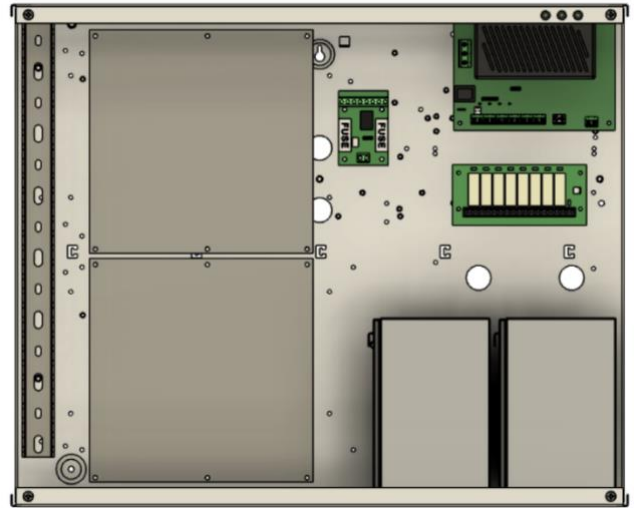


2 x Mercury controllers, Fire relay, D1532 PSU, 8-way splitter, 12V 17Ah Lead Acid Battery

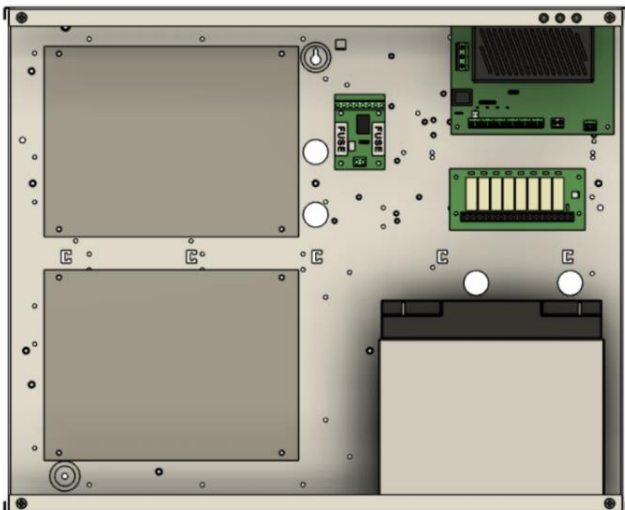
E-Box Configuration layout options



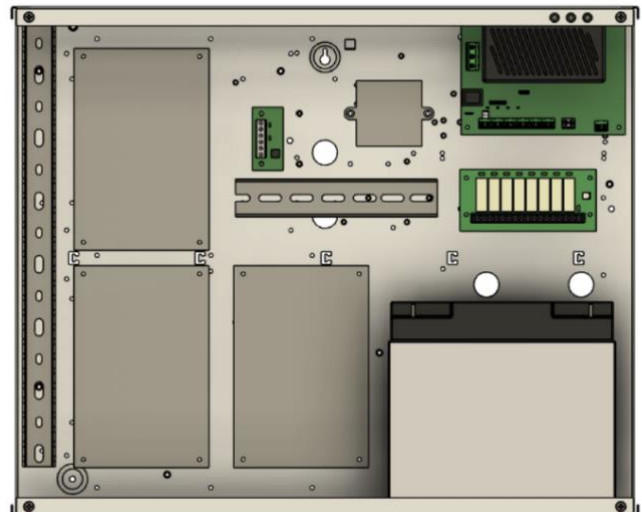
D2445, Fire relay, 4-way splitter, Main's connector block, 2x12V 17Ah Lead acid batteries, DIN rail



2 x Gallagher Cradles, D1532, Fire relay, 8-way splitter, 2 x 12V 7Ah Lead Acid Batteries, Cable management



2 x Mercury controllers, Fire relay, D1532 PSU, 8-way splitter glass fused, 12V 17Ah Lead Acid Battery



D1532, 3x ASP's, D2500, LRC filter, 8-way splitter, 12V 17Ah Lead Acid Battery, DIN rail, Cable management

Table 1 Dycon E-Box with Pre-installed Power Supplies

Part No.	Power Supply Type	Battery Charge	EN 50131 Grade	Fault Outputs or indications	Remote Switching Input
D1410-E	12VDC 10 x 1A or 1 x 10A	No	No	Output tripped LED only	No
D1460-E	13.8VDC 10A	Yes	No	Yes	Yes
D1501-E	13.8VDC 1A	Yes	No	No	No
D1503-E	13.8VDC 3A	Yes	No	No	No
D1520-E	13.8VDC 0.5A	Yes	Grade 2	Both	No
D1521-E	13.8VDC 1A	Yes	Grade 2	Both	No
D1522-E	13.8VDC 2A	Yes	Grade 2	Both	No
D1532-E	Smart 13.8VDC 3A	Yes	Grade 3	Both	No
D1541-E	13.8VDC 1A	Yes	No	Indicators only	No
D1542-E	13.8VDC 2A	Yes	No	Indicators only	No
D1543-E	13.8VDC 3A	Yes	No	Indicators only	No
D1545-E	13.8VDC 5A	Yes	No	Indicators only	No
D1553-E	Smart 13.8VDC 3A	Yes	No	Both	Yes
D1555-E	Smart 13.8VDC 5A	Yes	No	Both	Yes
D1565-E	Constant Voltage, 12-15VDC 5A	Yes	No	No	No
D1573-E	12VDC 3A	No	No	Output only	Yes
D1575-E	12VDC 5A	No	No	Output only	Yes
D1632-E	13.8VDC 3A 110VAC	Yes	No	Both	No
D2401-E	24VDC 1A	No	No	Output only	No
D2402-E	24VDC 2A	No	No	Output only	No
D2403-E	24VDC 3A	No	No	Output only	No
D2412-E	24VDC 2A	Yes	No	No	No
D2413-E	24VDC 3A	Yes	No	No	No
D2441-E	Smart 27.6VDC 2A	Yes	No	Both	Yes
D2443-E	Smart 27.6VDC 3A	Yes	No	Both	Yes
D2445-E	Smart 27.6VDC 5A	Yes	No	Both	Yes
D2904-E *2	27VAC 4A (4 x 1A)	No	No	No	No
DR-60-5-E *1	90-264VDC input, 5VDC 6.5A output, DIN-rail mount unit	No	No	No	No
DR-60-12-E *1	90-264VDC input, 12VDC 5A Output, DIN-rail mount unit	No	No	No	No
DR-60-24-E *1	90-264VDC input, 12VDC 2.5A Output, DIN-rail mount unit	No	No	No	No
MS-60-12-E *2	90-264VDC input, 12VDC 5A Output	No	No	No	No
MS-75-12-E *2	90-264VDC input, 12VDC 6.3A Output	No	No	No	No
MS-75-24-E *2	90-264VDC input, 12VDC 3.2A Output	No	No	No	No

Notes: *1 Requires DIN-rail length to be specified, see E-box Accessory options on the next page

*2 Supplied with an additional W-plate to which the PSU module is fitted

Table 2 Dycon E-Box Accessory Options

Part No.	Description	Purpose/Feature
D2500	Dual PSU Redundancy Switcher Module. 5Amp	Combines outputs from 2 x separate PSU's & automatically switches from one to the other when a failure of one is detected
DFR-1-12	12 VDC output Relay Modules	Can be used as a Fire Relay or to control doors/gates in access system. Provides volt free or switched power. Fused
DFR-1-24	24 VDC output Relay module	Can be used as a Fire Relay or to control doors/gates in access system. Provides volt free or switched power. Fused.
DFRSX4-0P	4-way Splitter	Electronically fused, 4-way output current splitter
DFRSX4-0G	4-way Splitter	Replaceable 1A fuses, 4-way output current splitter
D15X4-BNC	4-way BNC Output Splitter	Replaceable 500mA fuses, 4-way output current splitter into 4 x BNC sockets and with video loop-through capability
D15X8-500mA	8-way Splitter	Replaceable 500mA fuses, 8-way output current splitter
D15X8-1A	8-way Splitter	Replaceable 1A fuses, 8-way output current splitter
DMFILTER01	Mains LCR Filter	LCR filters helps to protect equipment from spikes and surges
CMS01-350	Cable Management System	Used to keep a large number of cables inside a housing separated from the other components and kept tidy. 50 x 25 length 350mm
DIN007	270mm length DIN-rail	DIN-rail for installing devices and accessories fitted with TS-35/7.5 or TS35/15 DIN-rail mountings
DIN-Custom-150	150mm length DIN-rail	DIN-rail: for installing devices and accessories fitted with TS-35/7.5 or TS35/15 DIN-rail mountings
DIN-Custom-650	650mm length DIN-rail	DIN-rail: for installing devices and accessories fitted with TS-35/7.5 or TS35/15 DIN-rail mountings
Tamperkit-01	Front & Back Anti-tamper kit	Provides EN50131 Grades 2 & 3 compliance tamper switch with cable and fixing
DY-FIX-001	PCB Fixing set	4 x Hex stand of 10 mm with M3 x6 screw for fixing third party products in housing.
CAB001	Battery cable T1 Spade	Fitted with Faston 4.75 'spade' connectors for 7 & 8Ah Sealed lead acid gel batteries 300 mm length
CAB0015	Battery cable T2 spade	Fitted with Faston 6.35 spade connector for 7& 8Ah sealed lead acid gel batteries 300 mm length
CAB002	Battery cable M5 O ring 500 mm	Fitted with M5 Screw-type connectors for 17Ah & Larger Sealed lead acid gel batteries 500 mm length
CAB037	Battery cable M5 o ring 750 mm	Fitted with M5 Screw-type connectors for 17Ah & Larger Sealed lead acid gel batteries 750 mm length
CAB003	Mains fuse block	Mains block connector with removable fuse holder

Dycon E-Box Specifications

Construction	Steel 0.9mm
External Dimensions (H x W x D mm)	500 x 408 x 90mm, including fixings
Weight	5.80 kgs
Standard Colour & finish	White RAL9003, powder-coated paint. Stock item
Optional black version	Black RAL9005, powder-coated, scratch resistant paint
Optional Grey version	Grey RAL9002, powder coated paint
Lid fixings	4 x M4 x10 mm zinc plated panhead screws

Dycon Power Solutions Ltd

Unit A, Cwm Cynon Business Park, Mountain Ash, CF45 4ER, United Kingdom.

For more information about the Dycon products:

website: www.dyconpower.com
email: sales@dyconpower.com

Or to discuss your specific needs:

+44 (0)1443 471 900



Dycon leads the security and associated power supply markets, with UK design and manufacture of advanced power products, engineered to provide high quality, cost-effective solutions to meet current regulations and the specific needs of system integrators and end-users.

E-box data sheet 29102021 V19